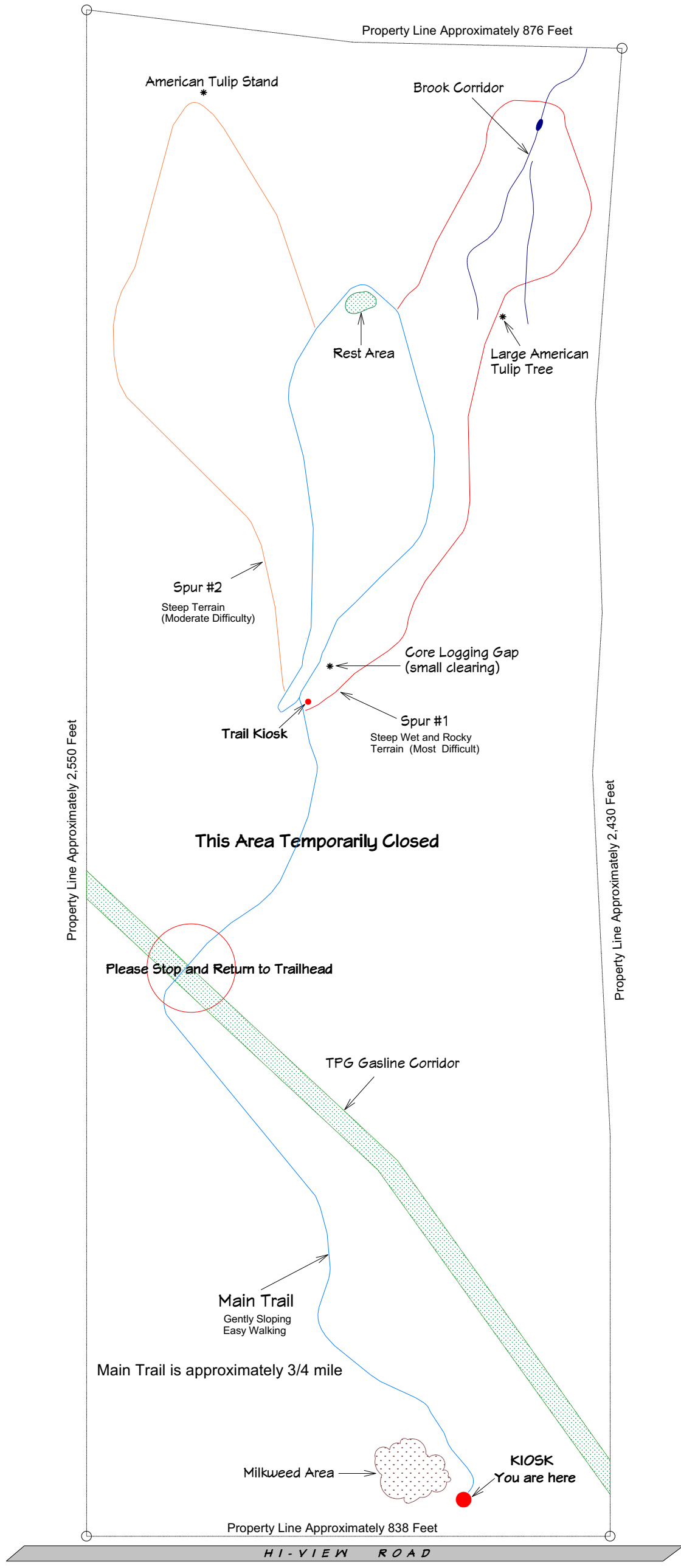
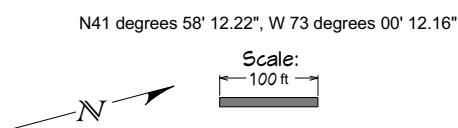


# Welcome to the Charles & Lois Beach Nature Preserve

(Please see "Trail Use Guidelines" on the back side of this kiosk)



A Hartland Land Trust Nature Preserve  
[www.hartlandlandtrust.org](http://www.hartlandlandtrust.org)  
[www.facebook.com/HartlandLandTrust](https://www.facebook.com/HartlandLandTrust)  
[Instagram@hartlandlandtrust](https://www.instagram.com/hartlandlandtrust)  
[hartlandCTlandtrust@gmail.com](mailto:hartlandCTlandtrust@gmail.com)



The Farmington River Coordinating Committee (FRCC) provided funding for projects associated with this preserve